



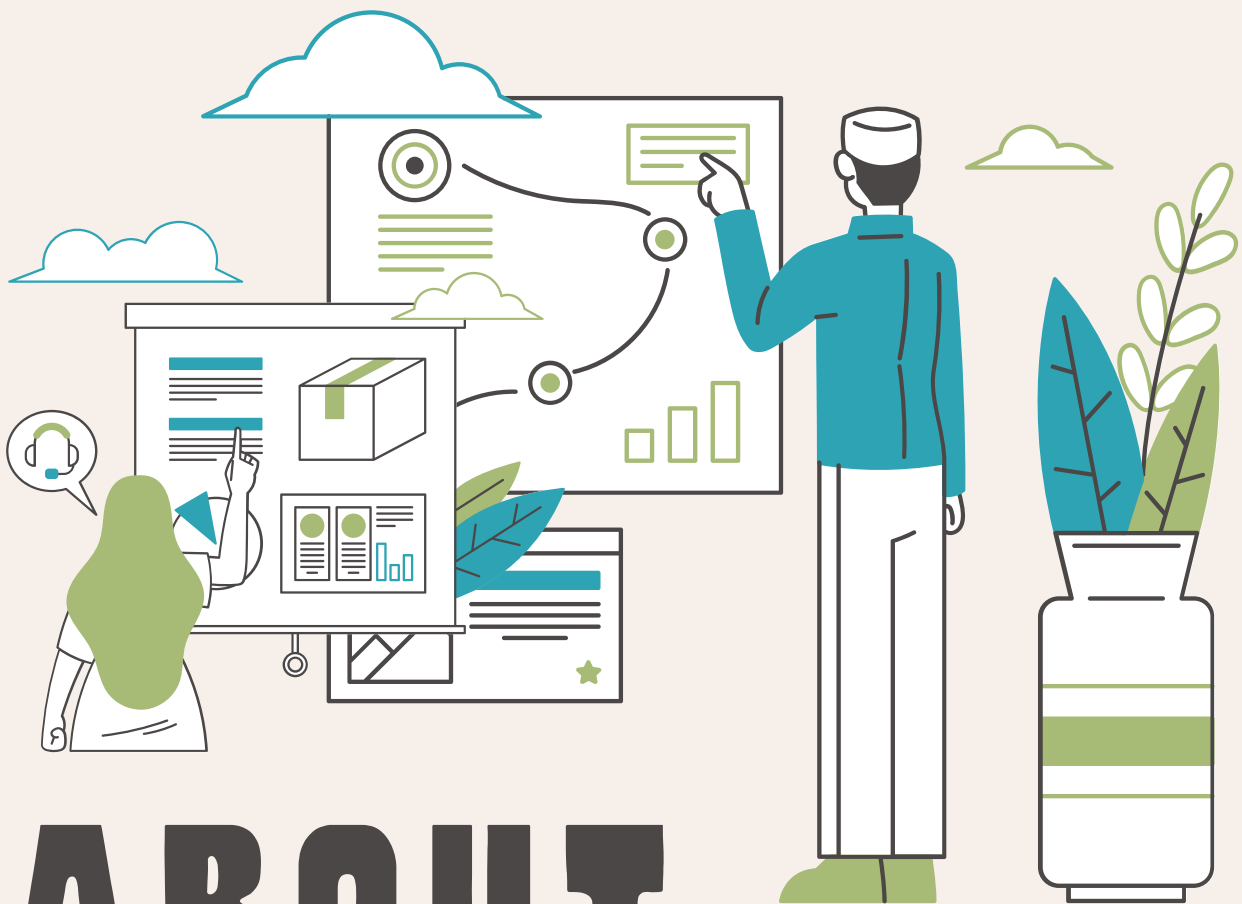
# Amrut Pathway Program

*Amrut owes its existence to the visionary leader Shri Shankarrao Kolhe Ji. A mass leader he worked tirelessly to bring prosperity and opportunity in Rural India.*

*Amrut Sugar is one of the only sugar brands which priorities cooperative societies and farmer led organisations in its product sourcing and development.*

*It was Shri Kolhe Ji who argued that why all farm based products fill coffers of capitalist structures and not benefit the farmers who make it realize at the first place.*

*Amrut, takes inspiration from Amul the largest marketing dairy brand supporting cooperatives and farmers and hopes to replicate the model for other farm produce.*



# ABOUT COMPANY

# LEARN

*Amrut is proud to have Sanjivani Business School as its academic partner. Now learn about managing and leading business in the right social context at SBS*



# ENGAGE

*As part of the program shortlisted students will get an opportunity to engage with real business problems during their management course.*

# LEAD

*Upon successful completion of the course candidates will secure an assured job and go on to lead in Amrut's management track.*



# AMRUT - SBS PATHWAY PROGRAM



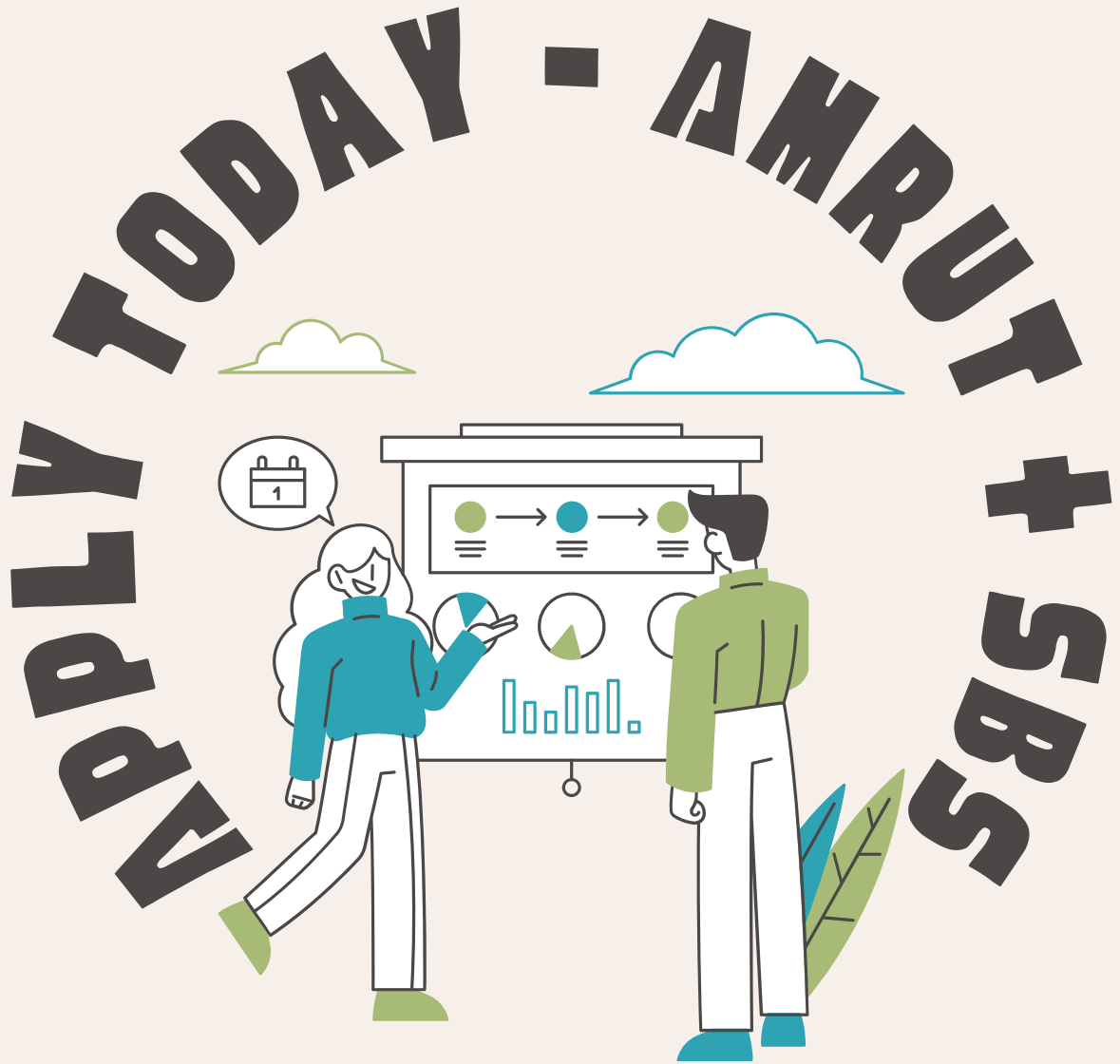
## Program Highlights

- Full time learning at leading management school - SBS
- Hands on experience in live projects while in campus
- Academic Scholarship-50%
- Assured job in an upcoming brand in FMCG of over INR 3.6 lpa+
- 30 months lock-in with firm post completion of SBS program.



## Program Timelines

- Open for SBS program students only.
- Shortlisting in first week of academic program
- Part time engagement over the program duration
- Expected to spend 10hrs/week during academic session
- Full engagement during internship and post course completion.



To Know More Contact:  
[hodmba@sanjivani.org.in](mailto:hodmba@sanjivani.org.in)  
[pradip.gurav@sanjivanigroup.org.in](mailto:pradip.gurav@sanjivanigroup.org.in)